



# Municipal Court

# Municipal Court

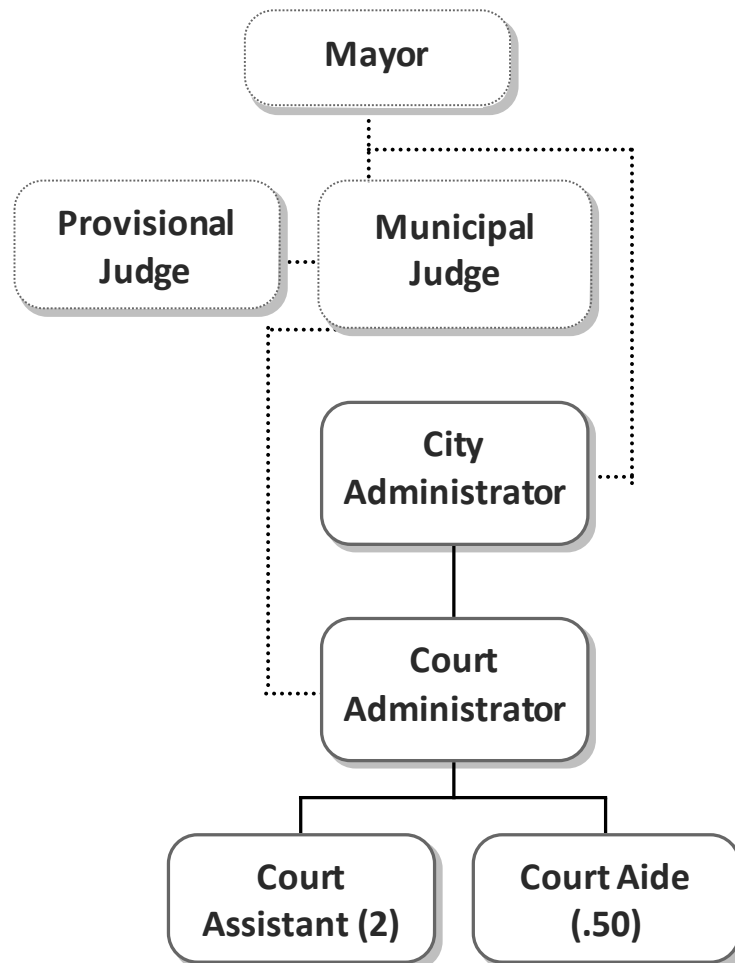
## Department Summary

---

<u>Program</u>	<u>General Fund</u>	<u>Total</u>
Municipal Court	363,614	363,614
<b>Total</b>	<b>\$363,614</b>	<b>\$363,614</b>

### Organization Chart

---



# Municipal Court

<b>Department</b>	<b>No.</b>	<b>Program</b>	<b>No.</b>	<b>Program Manager</b>
Municipal Court	70	Municipal Court	001	Municipal Judge

## Program Activities

### *Municipal Court*

The court is the judicial branch of city government. The Judge is appointed to a four-year term by the Mayor with the consent of the City Council. Traffic violations and other ordinance violations are tried by the court. The Judge serves on a part-time basis.

### *Violations Bureau*

To provide for the efficient collection of fines and costs assessed by the Municipal Court, the court has established the Violations Bureau. The Court Administrator operates this bureau and administers the day-to-day records management functions of the court.

<b>Performance Measures</b>				
<b>Metrics</b>	<b>2019 Actual</b>	<b>2020 Actual</b>	<b>2021 Estimate</b>	<b>2022 Projected</b>
New cases opened:	8,333	5,031	5,500	5,500
Traffic tickets	5,808	3,400	4,200	4,500
Complaints - non-traffic	1,988	1,350	1,300	1,300
Code enforcement cases	16	9	21	20
Parking	139	75	72	75
Court settings	72	58	65	72
Warrants Issued	3,190	1,400	3,600	3,600
DWI cases	350	225	80	85



**Annual Budget -2022**

**General Fund**

DEPARTMENT <b>Municipal Court</b>	NUMBER <b>70</b>	PROGRAM <b>Municipal Court</b>	NUMBER <b>001</b>
<b>Program Budget</b>			
Object of Expenditure	2020 Budget (Actual)	2021 Budget (Amended)	2022 Budget (Proposed)
PERSONNEL SERVICES	322,674	325,301	327,564
CONTRACTUAL SERVICES	25,998	32,725	36,050
TOTAL EXPENDITURES	348,672	358,026	363,614
<b>Personnel Schedule</b>			
Position	2020	2021	2022
MUNICIPAL JUDGE	0.20	0.20	0.20
PROVISIONAL MUNICIPAL JUDGE	0.10	0.10	0.10
COURT ADMINISTRATOR	1.00	1.00	1.00
COURT ASSISTANT	2.00	2.00	2.00
COURT AIDE	0.50	0.50	0.50
EMPLOYEES - FULL TIME EQUIVALENTS (FTE)	3.80	3.80	3.80



**Annual Budget -2022**

**General Fund**

DEPARTMENT <b>Municipal Court</b>		NUMBER <b>70</b>	PROGRAM <b>Municipal Court</b>			NUMBER <b>001</b>
Personnel Services		2020 Budget (Actual)	2021 Budget (Amended)	2022 Budget (Proposed)	Detail	
Account Number	Account Description					
710.00	SALARIES	244,234	245,925	250,022	Regular 188,886 Part-time 53,200 Overtime 2,000 Longevity pay 5,936	
711.00	BENEFITS	78,440	79,376	77,542	FICA 19,123 Workers' compensation 753 Health insurance 31,476 Life & Disability insurance 1,887 Dental insurance 1,080 Pension 23,223	
TOTALS		322,674	325,301	327,564		



Annual Budget -2022

General Fund

DEPARTMENT <b>Municipal Court</b>		NUMBER <b>70</b>	PROGRAM <b>Municipal Court</b>			NUMBER <b>001</b>
<b>Contractual Services</b>		<b>2020 Budget (Actual)</b>	<b>2021 Budget (Amended)</b>	<b>2022 Budget (Proposed)</b>	<b>Detail</b>	
<b>Account Number</b>	<b>Account Description</b>					
720.11	MISC. CONTRACTUAL	3,138	1,000	1,000	Prisoner incarceration	1,000
720.12	PROFESSIONAL SERVICES	0	3,300	3,300	Interpreters	300
					Attorney for indigent offenders	3,000
720.25	DATA PROCESSING	16,286	19,500	19,750	ITI court program subscription	19,750
720.26	PRINTING & BINDING	960	3,000	3,000	Court backing sheets, court forms	3,000
720.34	CREDIT CARD PROCESSING FEES	3,113	5,000	3,000	Credit Card processing fees	3,000
720.51	PROFESSIONAL DEVELOPMENT	2,501	925	6,000	See professional development request	6,000
	<b>TOTALS</b>	<b>25,998</b>	<b>32,725</b>	<b>36,050</b>		



DEPARTMENT	NUMBER	PROGRAM	NUMBER
<b>Municipal Court</b>	<b>70</b>	<b>Municipal Court</b>	<b>001</b>
<b>Professional Development Request</b>			
Organization/Conference	Location	Amount	Detail
ANNUAL CONFERENCE - COURT	Lake Ozark, MO	1,500	
ANNUAL CONFERENCE - JUDGE	Lake Ozark, MO	1,200	
MEETINGS & SEMINARS	Local	500	Local association training meetings (3)
MO ASSOC FOR COURT ADMIN		150	Membership dues (3)
NACM - ANNUAL CONFERENCE	Milwaukee, WI	2,375	
NATIONAL ASSOC FOR COURT ADMIN		125	Membership dues (1)
ST LOUIS ASSOC. OF COURT ADMIN		150	Membership dues (3)
	<b>TOTAL REQUEST</b>	<b>6,000</b>	

This page left intentionally blank.

